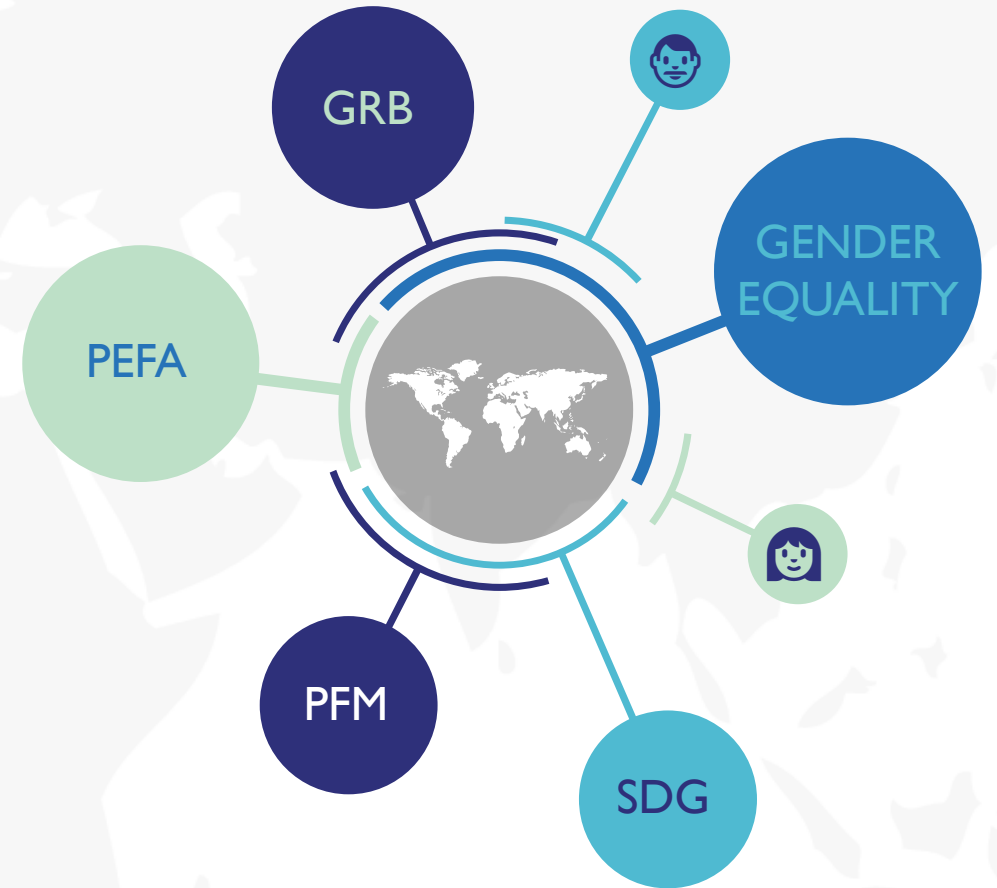




PEFA

SUPPLEMENTARY FRAMEWORK FOR ASSESSING **GENDER RESPONSIVE BUDGETING**



Why PEFA GRB Supplementary Framework?

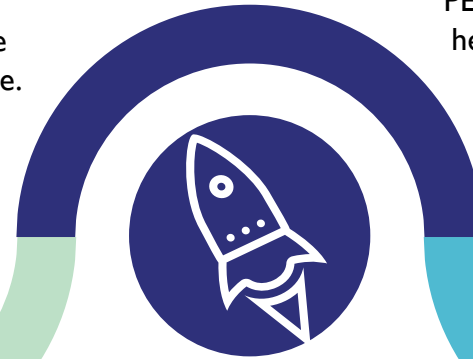
PEFA 2016: PI-8 ON SERVICE DELIVERY

PI-8 references sex-disaggregated performance information as good practice.



PUBLIC CONSULTATION ON PEFA 2016

Proposal to introduce the assessment of gender specific information in the budget process as part of PEFA.



OFFICIAL LAUNCH OF PEFA 2016 IN BUDAPEST

During the session on future of PEFA, participants identified GRB as the priority area that could be assessed through alignment with PEFA.

CONTRIBUTION TO SDG 5.C.I DESIGN

PEFA Secretariat was invited to help design the SDG indicator on GRB.



COUNTRY REQUESTS TO ASSESS GRB

Zimbabwe (2018) is the first PEFA assessment report that includes information on GRB as part of PI-8.



What is Gender Responsive Budgeting?

- GRB is grounded in the understanding that public budgeting decisions and PFM systems affect the economic and social outcomes for men and women, young and elderly, people with disabilities differently
- ‘Gender budgeting involves using the tools, techniques, and procedures of the budget cycle in a systematic way to promote equality’ (OECD)
- GRB does **NOT** entail separate budgets for men and women, boys and girls and does **NOT** require a new approach to budgeting but rather ‘an explicit recognition of the existence of gender elements paired with an adaptation and reinforcement of existing institutions and tools’ (IMF)

Thinking Behind the Design of PEFA GRB Supplementary Framework

2 KEY OBJECTIVES



COLLECTION OF INFORMATION

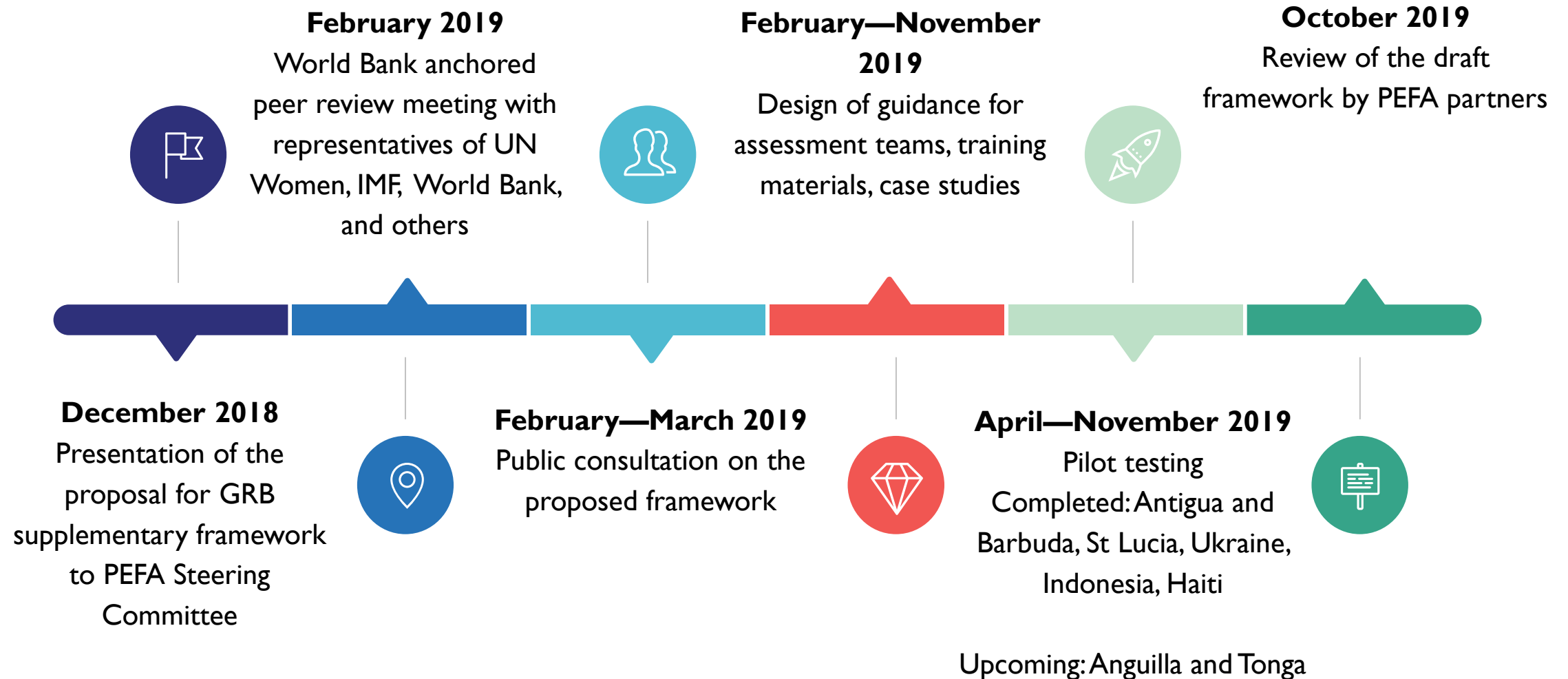
The PEFA GRB framework has been developed to facilitate the **collection of information** to assess the extent to which countries' PFM systems inherently promote and contribute to gender equality.

The purpose of the PEFA GRB assessment is to provide a benchmark of performance, highlight where progress has been made, and **identify the opportunities for countries to make their PFM more gender responsive** and use PFM to close persistent gender inequality gaps.



AWARENESS RAISING

Steps in the Design of PEFA GRB Supplementary Framework



Linking PEFA GRB with the Budget Cycle

ACCOUNTING & REPORTING AND SCRUTINY & AUDIT

GRB—9. Evaluation of impacts of service delivery on gender equality

GRB—8. Gender informative annual reports

GRB—7. Gender sensitive procurement

GRB—6. Tracking budget expenditure for gender equality

GRB—10. Gender responsive legislative scrutiny

GRB—1. Gender impact analysis of budget policy proposals

GRB—2. Gender impact analysis of investment projects

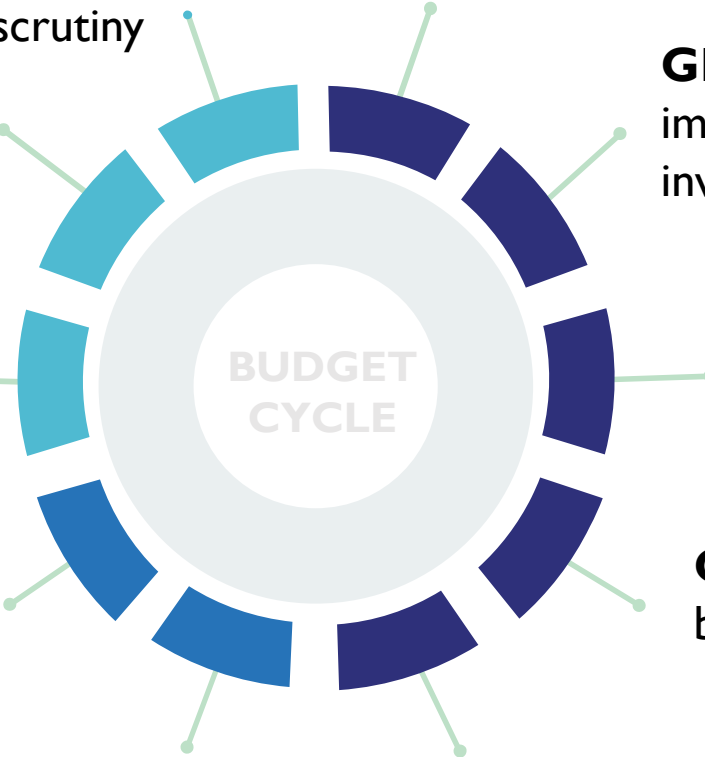
GRB—3. Gender responsive budget circular

GRB—4. Gender responsive budget documentation

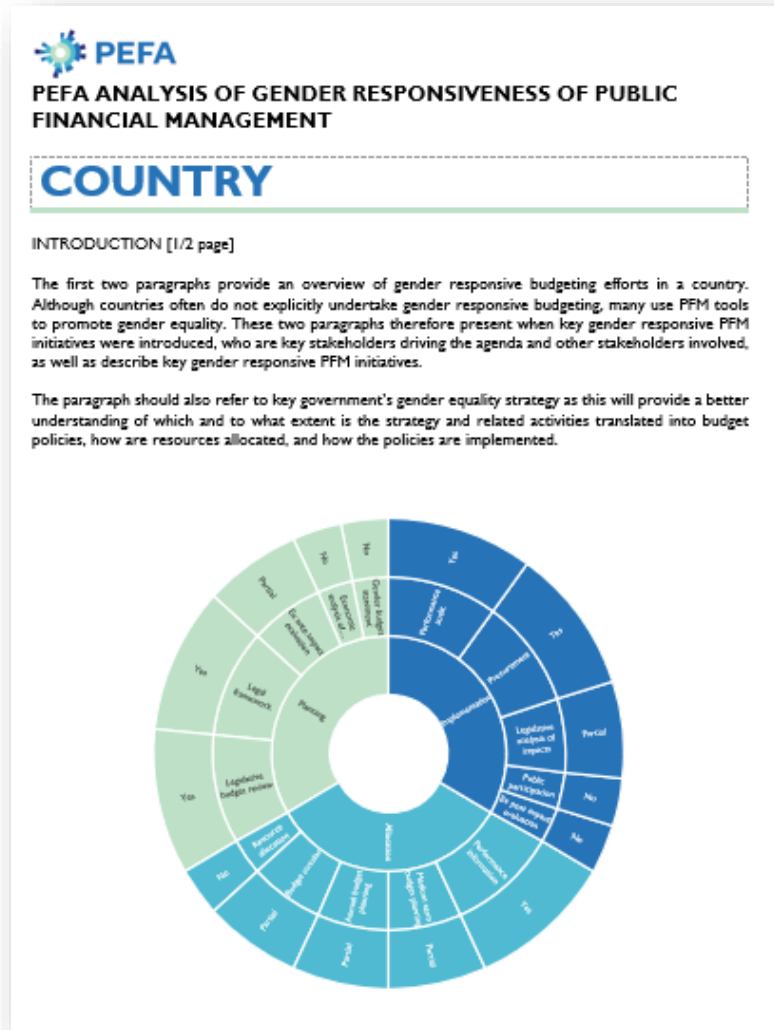
GRB—5. Sex-disaggregated performance information for service delivery

POLICY-BASED FISCAL STRATEGY & PLANNING

PREDICTABILITY & CONTROL IN BUDGET EXECUTION

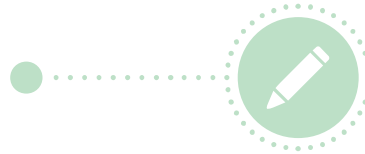


PEFA GRB Report Structure



INTRODUCTION [1/2 page]

It provides an overview of gender responsive budgeting efforts in a country and refers to key government's gender equality documents and stakeholders involved.



ASSESSMENT FINDINGS AND WAY FORWARD [1 page]

It provides an overview of findings of PEFA analysis of gender responsiveness of public financial management.



DETAILED ANALYSIS [3—5 pages]

In this part, the team provides responses to each of the questions and presents the evidence to justify the scoring.

If PEFA GRB assessment is conducted concurrently with the PEFA assessment, then the findings are presented in the Annex of the PEFA report.

PEFA GRB Guidance for Assessment Teams

GRB #2: GENDER RESPONSIVE ANALYSES OF INVESTMENT PROPOSALS

GUIDING QUESTION

Does the government carry out an analysis of the impacts of major public investment proposals on gender as part of the economic analysis of investment proposals?

DESCRIPTION

This indicator measures the extent to which the robust appraisal methods, based on economic analysis, to conduct feasibility or prefeasibility studies for major investment projects, include the analysis of the impacts on gender.

DIMENSIONS AND SCORING

Option 1: Levels of GRB practice on a four-point ordinal scale

SCORE	MINIMUM REQUIREMENTS FOR SCORES
A	Economic analyses to assess <i>all</i> major investment projects include the analysis of the impacts on gender.
B	Economic analyses to assess <i>most</i> major investment projects include the analysis of the impacts on gender.
C	Economic analyses to assess <i>some</i> major investment projects include the analysis of the impacts on gender.
D	Performance is less than required for a C score.

RELATED PEFA INDICATOR/DIMENSION

PI-11. Public investment management/PI-11.1. Economic analysis of investment proposals.

COVERAGE

Central government.

TIME PERIOD

Last completed fiscal year.

MEASUREMENT GUIDANCE

Public investments can serve as a key driver for economic growth. However, the effectiveness and efficiency of public investment is also a key determinant in maximizing its impact on the government's social and economic development objectives, including achieving gender equality.



ABOUT THE FRAMEWORK

ABOUT GRB

GUIDANCE ON SCORING

REPORT TEMPLATE

DATA REQUIREMENTS

GLOSSARY

USEFUL RESOURCES



PEFA ANALYSIS OF GENDER RESPONSIVENESS OF PUBLIC FINANCIAL MANAGEMENT

COUNTRY

INTRODUCTION [1/2 page]

The first two paragraphs provide an overview of gender responsive budgeting efforts in a country. Although countries often do not explicitly undertake gender responsive budgeting, many use PFM tools to promote gender equality. These two paragraphs therefore present when key gender responsive PFM initiatives were introduced, who are key stakeholders driving the agenda and other stakeholders involved, as well as describe key gender responsive PFM initiatives.

The paragraph should also refer to key government's gender equality strategy as this will provide a better understanding of which and to what extent is the strategy and related activities translated into budget policies, how are resources allocated, and how the policies are implemented.



Learn More about PEFA & Its GRB Framework



www.pefa.org

services@pefa.org